

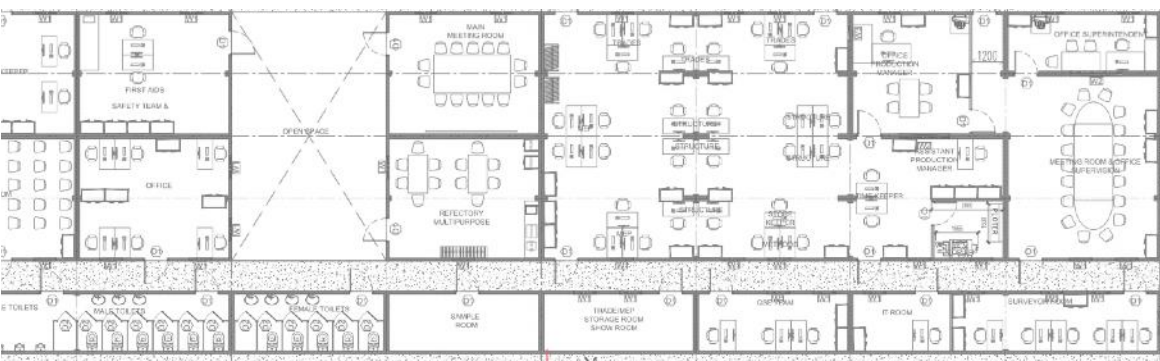
MODULARTM PRO

Prefabricated facilities
for professionals



About us

Modular solutions (MHD) is Myanmar company focused in designing, manufacturing and installation of all ranges prefabricated buildings solutions.



With **over 10 years of experience** as a market leader & with over **10 000 m2** of combined installed projects, we take pride in being able to provide end-to-end solutions that best match our customer needs & budget without compromising on quality.

Modular PRO® provides a full range of economic solution for professional industries for which time and budget is the priority while not compromising on quality and confort. The facilities can be installed in only a few hours and can easily be extended later on. We offer rental and buy-back services.



Our Responsibility



Environment Friendly

We deeply consider our global footprint & apply the **3 R's** principles. Modules structures are **Reused** without losing value promoting circularity. We **Recycle** 90% of our waste. Thermal insulation, energy efficient LED lighting **Reduces** energy consumption to a minimum.



Local manpower & Economy

We spend a significant amount of time training our employees on new construction techniques and QC, as well as keeping them informed about how the company is performing. We use local materials and favor local businesses where applicable.



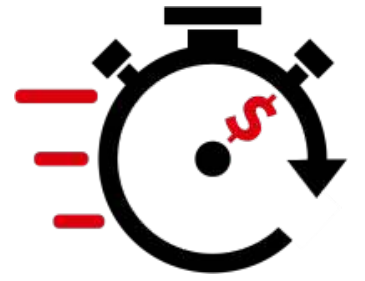
Health & Safety

We provide safe labour conditions & equipment, involving our employees in safety rules & policies. We apply risk assessment procedures and strive hard to make no compromise on our zero accident objective.

Advantages

Fast & cost effective

Fast building process without hidden delay or costs. Safe & flexible investment. Late on project schedule & eager to move in as soon as possible? Our factory tested solutions are built in less than one third of what it takes to build a conventional building.



Unmatched Quality & durability

Best quality in Myanmar with European standards, quality control and management. There is no room for improvisation. We spend a lot of time on R&D choosing and testing materials that will last for decades.

Turnkey Solutions with best customer service

We provide a full range of services from design, production, installation to maintenance and relocation. A very responsive client oriented team dedicated to your project will handle all your headache.



Modular & Scalable

Portable modules, easy to install, expand or relocate. For temporary or permanent building. Our modules have standard shipping sizes and are easy to move with conventional transport. Your facilities can grow along with your business

“Everything proof” & low maintenance

Earthquake resistant, very strong in any weather condition. Very Safe against human and noise intrusions. Each piece of material, hidden or visible, is treated against fire, insects & mold. Rest or work confidently.



Heat Efficient & comfortable

Optimal energy efficiency with up to four thermal protections. Stays cool & comfortable. Our solution may end-up being re-installed in very different climates from hot days of tropical sun to chilly nights of a mountain weather.

Movable Products



Modular Pro® Containerized - *sales/rental/buy back**

Heavy duty and extremely long lasting modules from fully repurposed shipping containers. Our modules are easy to repair and to maintain, are shipped with all equipment ready & requires nearly no installation time one site. Up to 4 storey stack-ability.

Solutions for:

- Small construction site office
- Specialized Kitchens
- Restroom & ablution blocs
- Accommodations with bathroom
- Datacenter
- Water treatment plants
- Laboratories
- Security cabin
- etc.



Modular Pro® Storage Containers - *sales/rental/buy back**

Immediately available, 20ft second hand heavy duty containers, secured, clean and waterproof solution for storage. Suitable for keeping goods dry or cool avoiding cold chain breaks. A positive air pressure ventilation system is available as an option for dust-free, clean storage.



** for standard and 20ft modules only*

Movable Products

Modular Pro® Flatpack - *sales/rental/buy back**

Long lasting EPS insulated flatpack solution for scaled facilities & open space projects where transport represent a significant cost. Up to 3 storey stack-ability.

Solutions for:

- Medium to big Construction site office
- Accommodations & dormitory
- etc.



Modular Pro® Folding - *sales/rental/buy back*

Folding unit is our budget temporary product when modules doesn't need to be connected. The simpler and cheapest option to install and relocate in no time. Up to 2 storey stack-ability.

Solutions for:

- Small site office, accommodation
- etc.



Movable Products comparison

Each product serves its purpose, **Modular PRO®** movable range have a dedicated solution depending on your own requirement. Each project is unique and our team will help you to choose the best and most cost effective option according to the specificities of your project.

			
	Modular Pro® Containerized	Modular Pro® Flatpack	Modular Pro® Folding
Durability	★★★★	★★★	★★★
Cost	★★★	★★★★	★★★★
Installation	★★★★	★★★	★★★★
Transport	★★★	★★★★	★★★★
Repairability	★★★★	★★★★	★★★
Storage	★★★	★★★★	★★★★
Customization	★★★★	★★★	★★★
Production time	★★★	★★★★	★★★★
Interior finish	★★★★	★★★★	★★★
Resistance	★★★★	★★★	★★★
Eco-friendly	★★★★	★★★	★★★★
Large space	YES	YES	NO
Storey	Up to 4	Up to 3	Up to 2



info@modular-solutions.asia



09 764 564 757 - 09 36 131 465



<https://modular-solutions.asia>

Steel structure Products

Modular Pro® T Type - sales only

Semi permanent to permanent custom buildings solution with steel structure and highly effective sandwich panel walls. Prefabricated building durability at its best. Solution for projects where modern aesthetics is important.



Modular Pro® K Type - sales only

Temporary facilities using highly optimized light steel structure with standard EPS insulated sandwich panel as enclosure wall material. Installation require a concrete floor. Solution for projects where budget is the priority.



** frame only*



INSTITUT
FRANÇAIS

Héli Union



PACIFIC HUNT ENERGY



Schindler



SHWE TAUNG



飯田通商株式会社
IIDA ELECTRONICS (MYANMAR) CO., LTD.



BEN LINE AGENCIES



Any Question? - Contact us !

✉ info@modular-solutions.asia

☎ 09 764 564 757 - 09 36 131 465



<https://modular-solutions.asia>



modular-solutions-mhd



modular.myanmar